

President's Message

This month, Jersey Infrared Consultants celebrated a milestone – our 30th Anniversary. In that time, it is hard to believe how far we have come.



In 1984, there were no cell phones, email or even fax machines. Infrared imagers were monochromatic and images were recorded on Polaroid film. Thermography did not enjoy the widespread use and acceptance that it does today. Since that time, technology has advanced by leaps and bounds. Thermal imaging has become mainstream to the point that it appears in the media on a near-daily basis.

From our start and what remains most important to us today are the relationships that we enjoy with our clients and colleagues. We thank you for business, your friendship and support, and looking forward to serving your needs for another 30 years.

[Contact us](#)

Standards for Infrared Inspections of Electrical Systems

Performed properly, infrared inspections are a valuable tool for preventive/predictive maintenance of electrical systems. Current industry standards cover inspection procedures, certification of personnel, equipment selection and use, and safety. Presently, standards that apply to infrared inspections of electrical systems are published by:

- National Fire Protection Association
- American Society for Testing and Materials
- InterNational Electrical Testing Association
- Occupational Safety and Health Administration
- Infrasppection Institute

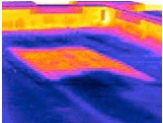


Infrared Electrical System Surveys performed by Jersey Infrared Consultants meet or exceed published industry standards. All inspections are performed by Infrasppection Institute Certified Infrared Thermographers using state-of-the-art equipment.

[More Information](#)

Is Your Roof a Candidate for an Infrared Survey?

Infrared Flat Roof Moisture Surveys can usually be performed on commercial flat or low-slope roof systems that are composed of a roof membrane over and in direct contact with insulation. The presence of insulation is necessary to provide a material to retain the moisture as well as to absorb solar energy. The membrane may be built-up or single-ply, smooth or gravel surfaced, or have a coating of any color. Since all IR imagers are NOT alike, it is essential that the appropriate IR imager be utilized. For example, in order to perform an accurate Infrared Survey of a reflective roof membrane (aluma-coated, TPO, PVC, etc.), the Survey is best performed using a short-wave infrared imager. Using a long-wave IR imager on such roof will often cause moisture damaged insulation to go completely undetected.



If you are unsure if your roof is a candidate for Infrared Flat Roof Moisture Survey, please contact us to discuss the specific conditions.

[More Information](#)

Eliminate Panel Cover Removal With IR Windows

Because infrared imagers cannot 'see' through solid objects, accurate infrared inspections of electrical switchgear require the removal of panel covers to provide a direct line-of sight to subject components. Often, panel cover removal/replacement is the most time-consuming aspect of an infrared inspection. One alternative is the installation of IR switchgear windows. The benefits of installing IR Windows include:

- Cost Savings / Increased Efficiency
- Data Management
- Risk Management
- Safety
- Standards Compliant

With over 30 years experience, Jersey Infrared Consultants are uniquely qualified to answer questions you may have related to IR switchgear windows. We offer a wide range of switchgear windows and can install them for you.

[More Information](#)

