

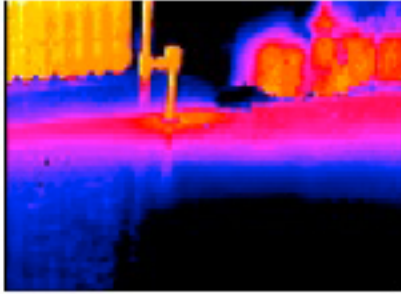
President's Message

Welcome to the first edition of Jersey Infrared Consultants' online bi-monthly Newsletter. Although Jersey Infrared Consultants has sponsored newsletters in the past, this is the first, of what we hope will be many, web-based issues. In this forum we hope to provide you with timely, relevant information about infrared thermography and related technologies that we believe will be of benefit to you. We will also provide discounts and incentives available exclusively to subscribers of this Newsletter.

We welcome your thoughts and feedback and hope that you like what you see. If so, please tell a friend.

[Subscribe to our Newsletter](#)

Steam Trap Surveys Yield Huge Green Dividends



Many sites produce or buy steam for heating or manufacturing purposes. As essential components of a steam system, steam traps are mechanical devices that can have a direct and substantial impact on your bottom line. Today's energy costs, combined with an average industry failure rate exceeding 50% of installed traps, your facility could be losing hundreds of thousands of dollars per year!

Utilizing a multi-technology approach, our Infrasonic™ Steam System Surveys are performed by Infraspection Institute Certified Infrared Thermographers® using contact ultrasound detectors and thermal imaging.

Combined with timely, effective repairs, steam trap surveys provide you with the information to eliminate energy waste, reduce your carbon footprint, and increase your bottom line. Locating and repairing a single failed trap can pay for an entire survey.



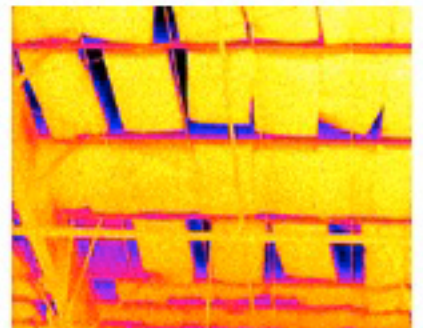
[More Information](#)

Infrared Building Envelope Surveys - The Basics



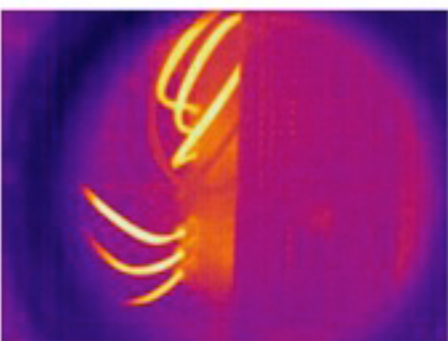
Two types of energy loss can occur within a building envelope. The first type of loss is conduction. Conduction losses are most often due to missing/damaged or water-saturated insulation within the building wall and/or roof. Under proper weather and site conditions, our Infrared Building Envelope Surveys can detect and document evidence of energy loss or latent moisture within building sidewalls including EIFS clad structures.

The second type of heat loss is air leakage. Air infiltration/exfiltration can occur at numerous locations within a building envelope through seemingly insignificant cracks and uncaulked openings. Air infiltration can be detected when Surveys are performed from the building interior; exfiltration may be detected from the exterior of the building.



[More Information](#)

IR Windows Increase Safety



With interest in NFPA 70E at all-time high, many companies are seeking ways to conduct their infrared inspections more safely. Because IR windows permit infrared inspections to be conducted without having to open panel covers, personnel are protected from arc flash and electric shock hazards.

Proper application of IR windows begins with making the right choice. IRISS windows are available in a wide selection of window materials,

sizes, and shapes designed to cost effectively meet any application or installation challenge.



As representatives for IRISS, Inc., Jersey Infrared Consultants offer sales, installation, and training for the world's most complete and comprehensive line of IR switchgear windows and ports. With our extensive infrared experience, Jersey Infrared Consultants can provide you with guidance to help ensure the success of your installation.

[More Information](#)